

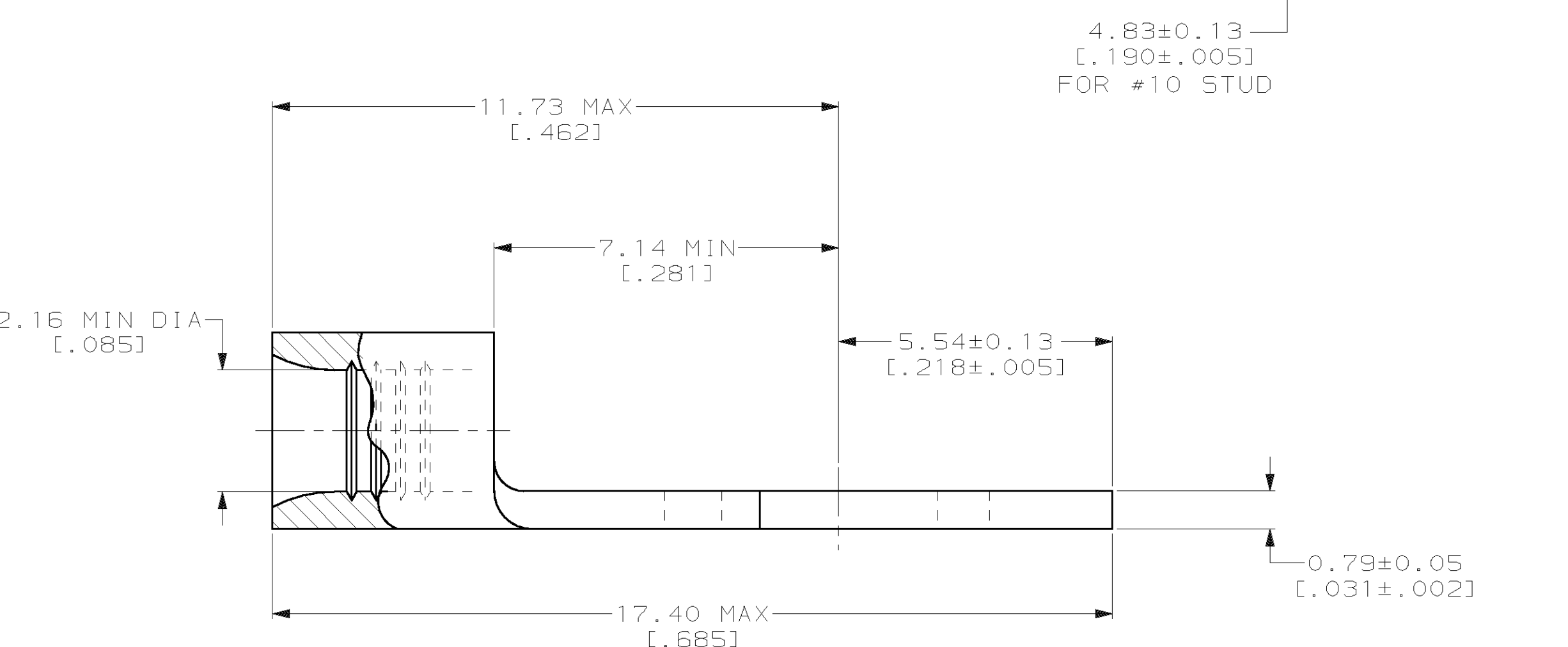
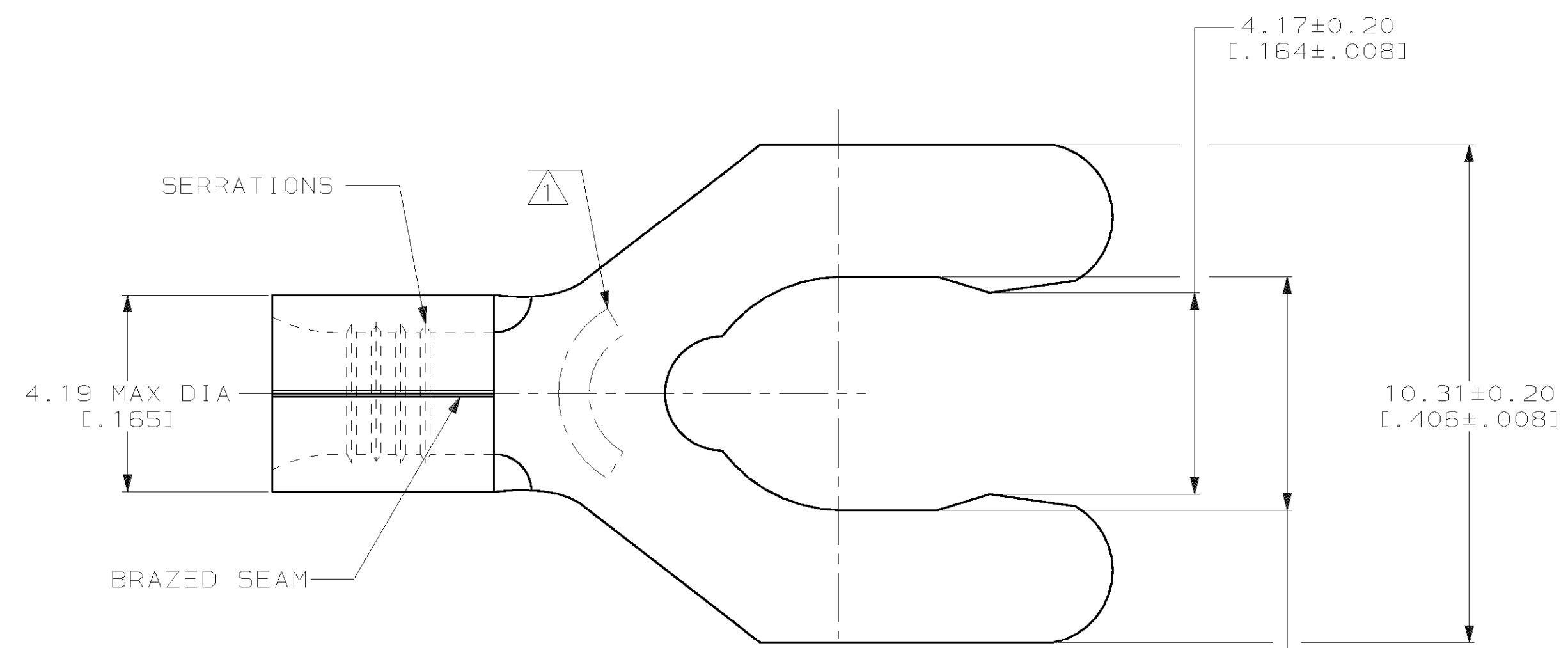
THIS DRAWING IS UNPUBLISHED. RELEASED FOR PUBLICATION, 19 .
 © COPYRIGHT 19 BY AMP INCORPORATED. ALL INTERNATIONAL RIGHTS RESERVED.

| LOC | DIST | P | F | ZONE | LTR | DESCRIPTION | DATE | APPD |
|-----|------|---|---|------|-----|--|---------|---------|
| G | 14 | | | | | C REV, RDRW, & SM PKG PER 0720-0040-93 | 3-29-93 | TRB DAP |

METRIC
 DIMENSIONS LISTED IN mm [INCHES]

| | |
|--------------------------------|--------------------------------|
| AMP WIRE RANGE | UL E13288 Listed |
| 16-14 AWG SOLID OR STRANDED | 16-14 AWG SOLID OR STRANDED |
| CS LR7189 Certified | MILITARY P/N AND CLASS |
| 16-14 AWG SOLID OR STRANDED | NOT APPLICABLE |

⚠ STAMP 105 AMP 16-14* APPROX AS SHOWN
 105 INDICATES STUD SIZE



| 100 | LOOSE PIECE, BOX SPECIAL (NO WINDOW) | 8-53125-5 |
|----------|---|-----------|
| 100 | LOOSE PIECE, BOX | 8-53125-1 |
| 5000 | ON TAPE | 53125-2 |
| ---- | LOOSE PIECE | 53125-1 |
| QUANTITY | PACKAGING TYPE | PART NO |

| | | | | | |
|--|--|---|--|---|--|
| AMP INCORPORATED CUSTOMER SERVICE SYSTEMS | | MAX RECOMMENDED OPERATING TEMPERATURE: 170°C MAX | DO NOT SCALE PRINT. UNLESS SPECIFIED DIMENSIONS IN mm [INCHES] TOLERANCES ON: 2 PLC DEC ± - 3 PLC DEC ± - ANGLES ± - | DR 3-29-93 TA BRINKMAN CHK 3-29-93 DA PATTERSON APPD 3-29-93 DE MILLER APPD 3-29-93 JL MECKLEY | AMP AMP Incorporated Harrisburg, PA 17105-3608 |
| FOR ADDITIONAL PRODUCT INFORMATION OR COPIES OF DRAWINGS AND TECHNICAL DOCUMENTS | PRODUCT INFORMATION CENTER 1-800-522-6752 | VOLTAGE RATING: NOT APPLICABLE | MATERIAL PHOSPHOR BRONZE PER ASTM B-103 ANNEALED | PRODUCT SPEC - | |
| FOR APPLICATION TOOLING INFORMATION | TOOLING ASSISTANCE CENTER 1-800-722-1111 | WIRE CROSS SECTIONAL AREA RANGE: 1.04-2.62mm ² [2,050-5,180] CIR MILS SOLID OR STRANDED | FINISH TIN PLATE 0.00254 [.000100] MIN THK PER MIL-T-10727 | APPLICATION SPEC - | SIZE C 00779 |
| FOR ORDER ENTRY | 1-800-526-5142 | THIS DRAWING IS A CONTROLLED DOCUMENT FOR AMP INCORPORATED. IT IS SUBJECT TO CHANGE AND THE CONTROLLING ENGINEERING ORGANIZATION SHOULD BE CONTACTED FOR THE LATEST REVISION. | | WEIGHT - | DRAWING NO C-53125 |
| | | | | | SCALE 10:1 |
| | | | | | SHEET 1 OF 1 |